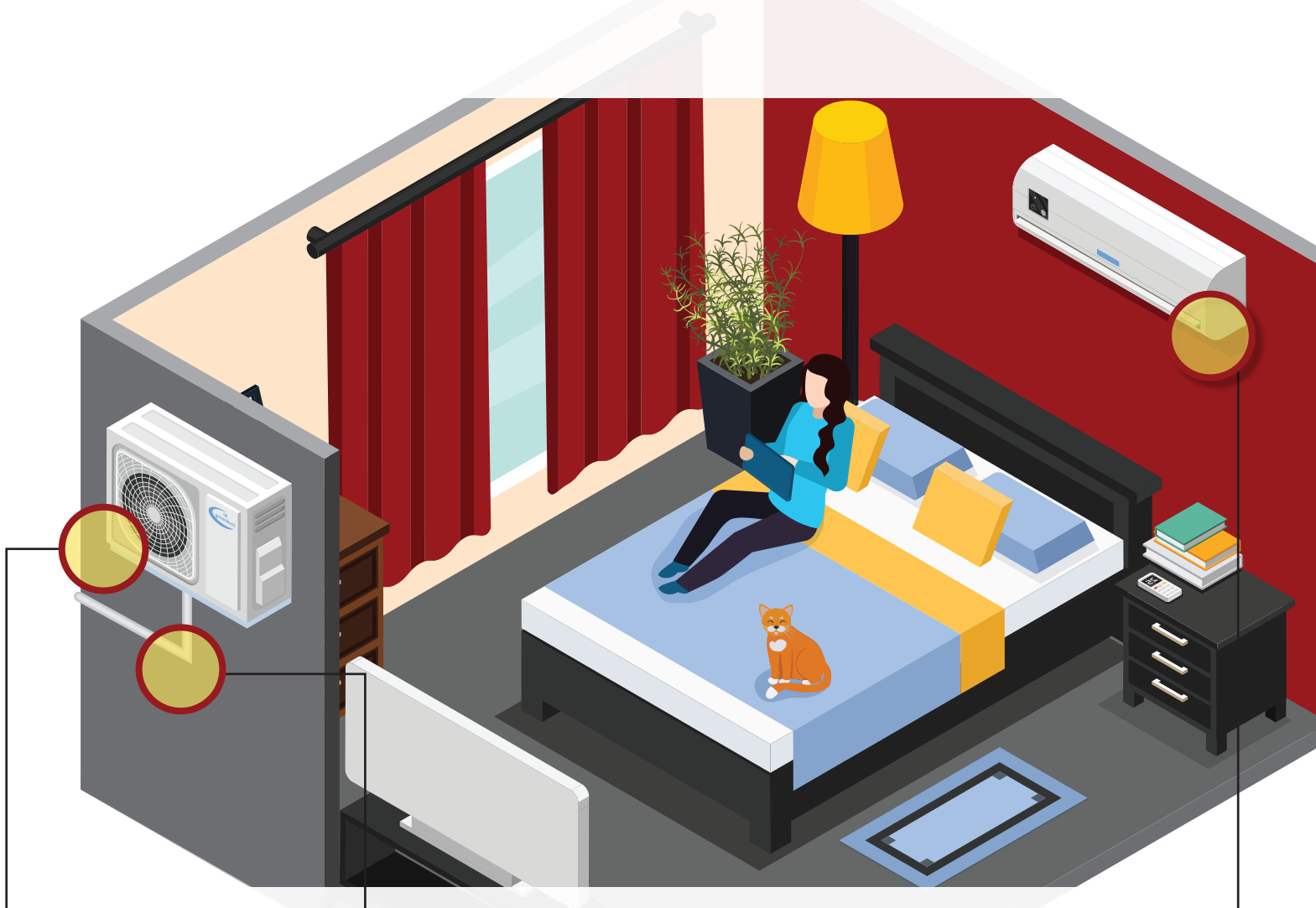


HOW DOES A HEAT PUMP WORK?

Heat pumps are efficient home heating and cooling systems, and they come in a variety of configurations. But how can they heat and cool a home so effectively and efficiently? Here are the basics of how a heat pump works.



AIR COMPRESSOR

The outdoor compressor unit absorbs heat in the winter and expels indoor heat in the summer.

CONDUIT/ REFRIGERANT LINE

This airtight connection between the air handler and the compressor facilitates the two-way refrigeration process.

INDOOR AIR HANDLER

Mounted on the interior wall, indoor air handlers deliver conditioned air and absorb heat in heating modes.

HEAT PUMP HEATING & COOLING RESULTS IN:



Reduced energy usage related to heating and cooling



Eco-friendly, all-electric heating and cooling



Better indoor air quality



A more comfortable home

ENERGY SAVERS MAXIMIZES HEAT PUMP EFFICIENCY

Heat pumps operate at peak efficiency when a home has been properly insulated and air sealed, at the whole-home level. Energy Savers specializes in heat pump installation and provides home efficiency upgrades like insulation, air sealing, window replacements, and more, all informed by a whole-home energy audit.

Call Energy Savers and get the most out of your heat pump upgrade.

ENERGYSAVERS.CNY.COM

